

FAST 14000 PUMP PRO PLUS WIDE



Powerful and fast fogging system, can cover up to **14000 m³ in 200 seconds** (4500 m³ visibility less than 1 m).



14000

GENERAL SPECIFICATIONS

Weight of the fogging machine	about 59 KG
Weight with packaging	about 63 KG
Units on one pallet 100×120	4
Dimension of the machine	30,5 X44,0 XH43,5
Dimension of the packaging	49,0 X61,0 XH62,5
Colors	white
Working time without mains power	about 4 hours
Heating from cold	about 5 hours
Vertical mounting	yes, bracket included
Horizontal mounting	no
Usb port for monitoring	yes
Nozzle tamper	yes
Serial interface RS232 with UR FOG Standard protocol	yes
Alarm kit	opzional

STANDARD

Complies with european CE	yes
Fog fluid is certified	yes
Meets european standard	yes

FOGGING SYSTEM

New heating system "Layer"	yes
Coverage in a single shot (visibility more than 1,5 m)	up to 14000 m ³
Coverage in a single shot (visibility less than 1 m)	up to 4500 m ³
Max seconds of fog emission	200 sec
Max fog emitted with full fog bag	9000 m ³
Number of bag	1
Fog tank capacity	1 x 5000 ml
Shooting specification	programmable in seconds
Bag included	1

ELECTRICAL SPECIFICATIONS

Mains power	230 V or 120 V
Average power consumption	80 W
Back up battery (not included)	yes
Pir sensor validation input	yes
Shot confirmation output	yes
Power supply	yes

It is a powerful and fast fogging system, ideal to protect large areas like big shops, warehouses, superstores or even to protect targets in open space.

It is prearranged to an easy wall installation (bracket included) and it has a side compartment to equip boards or accessories if needed.

Accessories and refills FAST 14000 PUMP PRO PLUS WIDE

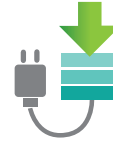
CODE	ACCESSORIES AND REFILLS	FAST 14000 PUMP PRO PLUS WIDE
FFLXRC50	Fluid bag 5000 ml	■
FFLXRC50FG	Fluid bag 5000 ml Food Grade	■
F23PRUG7	Nozzle extension 7 cm	■
F1M03UG3	3 holes nozzle	■
F23KITD	Demo Kit (key + keyfob/receiver + button)	■
F23KITA	Anti-robbery Kit: cable + jumper	■
URRE	Relay board	■
F123KEY	Arming key	■
-----	Wall bracket Pump 14000 <i>included</i>	■ (included)
URTR	Keyfob + receiver	■
URT	Additional keyfob	■
URRS232	Transceiver rs232 5/12 V	■
URCLWF	Active Cloud Lan / WIFI board	■
URCLWFA	Wifi antenna module	■
URCLWF014	Mounting kit 1500 - 6000 - 14000 with external box (external plastic box + external flat cable + 1x24 mm rubber + 2x16 mm rubbers)	■
FPUM	2 handlers	■



Exclusive patented system that allows to detect automatically if the nozzle has been obstructed by sending a signal in case of tampering.



Disposable recharge, very easy to replace, at a very competitive price.



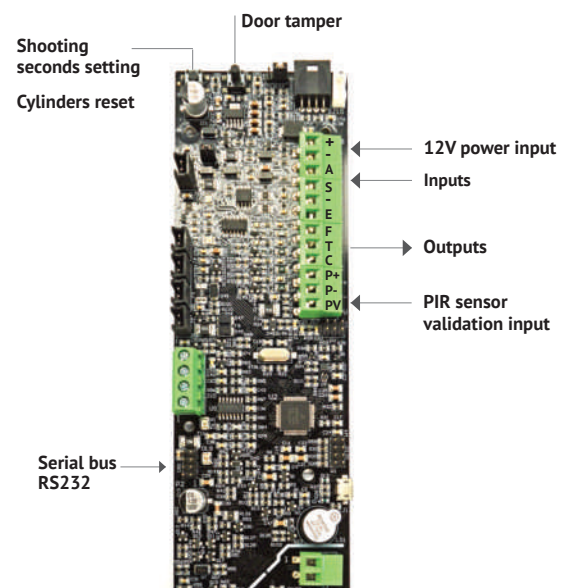
Thanks to the massive insulation UR FOG fogging systems have a very low power consumption and can shoot for a long time in absence of mains power; temperature remains stable over time.

Long lasting operation time without mains
The innovative thermal insulation of the heater allows UR Fog systems to work for a long period of time without mains power: about 3 hours!

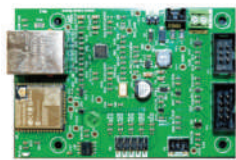


A unique serial bus to plug on the electronic board an add on card that allows to interface easily the machine with alarms and to control the fogging system even from remote locations. A standard protocol is available for all machines.

Electronic board



INPUTS	
+	+12V power input
-	GND power input
ARM	Arming input
SHOOT	Shooting input
-	GND
OUTPUTS	
EMPTY	Empty cylinder output
FAULT	Fault output
TAMPER	Tamper output
CONFIRM	Shot confirmation output
PIR SENSOR VALIDATION INPUT	
P+	+12V for PIR power supply
P-	GND for PIR power supply / COM. PIR
PV	N.C. PIR



Active Cloud LAN / Wifi board

The WIFI LAN board allows wired or wireless Lan connection. Through the extremely secure Cloud service, provided for free, it allows, in addition to system monitoring, to remotely arm, shoot and set shooting time of the fogging system.

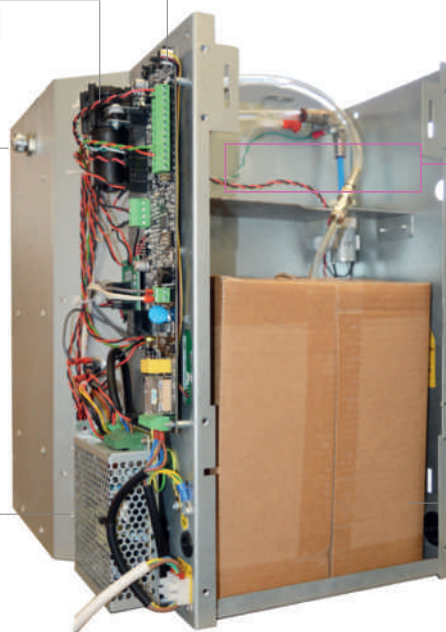
FOG STORM PUMP

Specially designed to work with high-glycol percentage fluids



Adjustable nozzle with anti-tampering function

Pro Plus board



Optional 2Ah battery to power the electronic board and motors in case of mains power failure



Power supply for the electronic board and motors

Fluid Bag